



APR BRIGHT INDUSTRIES
ISO 9001:2008 CERTIFIED COMPANY

JIB CRANES MANUFACTURERS

APR Cranes

**FACTORY ADDRESS: EPIP-1,
BADDI, HIMACHAL PRADESH
174103**

PHONE: +91- 98167-00039

**EMAIL:
APRBRIGHT@GMAIL.COM**



TABLE OF CONTENTS

What is a Jib Crane?

Types of Jib Cranes

Applications

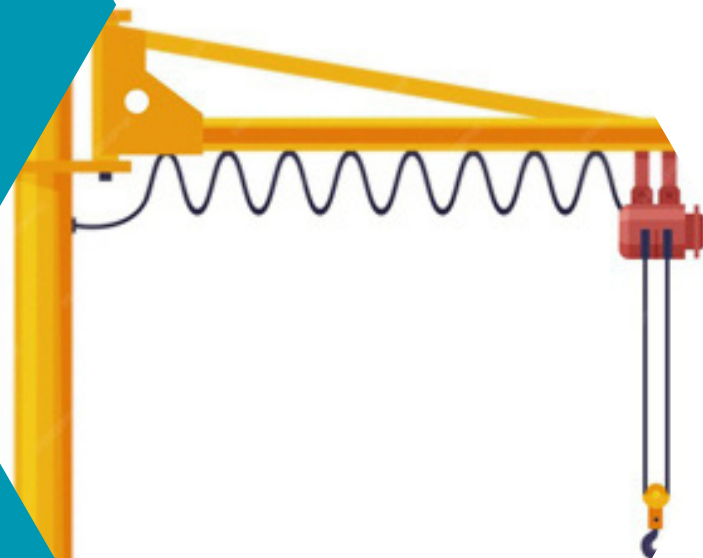
Key Features

Load Capacity

Safety Considerations

Maintenance

JIB Crane is a type of mechanical lifting device used for handling heavy loads. It consists of a horizontal arm, known as the jib, that is used to lift, move, and lower objects. The crane typically operates within a limited area, making it ideal for situations where space is constrained.





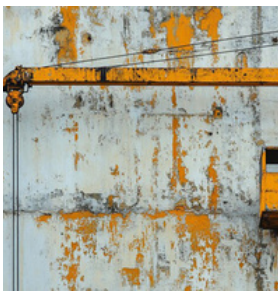
APR BRIGHT INDUSTRIES

ISO 9001:2008 CERTIFIED COMPANY

APR Cranes is a manufacturer specializing in heavy-duty material handling equipment, including gantry cranes, EOT cranes, jib cranes, electric wire rope hoists, and more. We offer customized solutions for gantry cranes, available in both single and double girder designs.

Our cranes are thoroughly tested and environmentally friendly, suitable for both outdoor and indoor operations. Additionally, Goliath cranes are designed to handle heavy-duty loads while ensuring safety and enhancing productivity. The majority of our cranes are used in shipyards, where they perform reliably and efficiently.

THE ANAYA TECH TEAM



Wall-Mounted Jib Cranes

Attached to a wall or structure, it saves space and is often used in existing buildings or structures.



Articulating Jib Cranes

Features multiple jointed arms, allowing for a greater range of motion.



Pillar-Mounted Jib Crane

A version where the jib crane is mounted on a free-standing column or pillar for more mobility.

JIB CRANES FUNCTIONS

Jib cranes are versatile lifting devices commonly used in various industries to enhance efficiency and safety in material handling operations. Here are the key functions of jib cranes:

Material Handling: Jib cranes are adept at lifting and moving heavy materials within a designated workspace.

They can easily transport loads between workstations, storage areas, and loading docks.

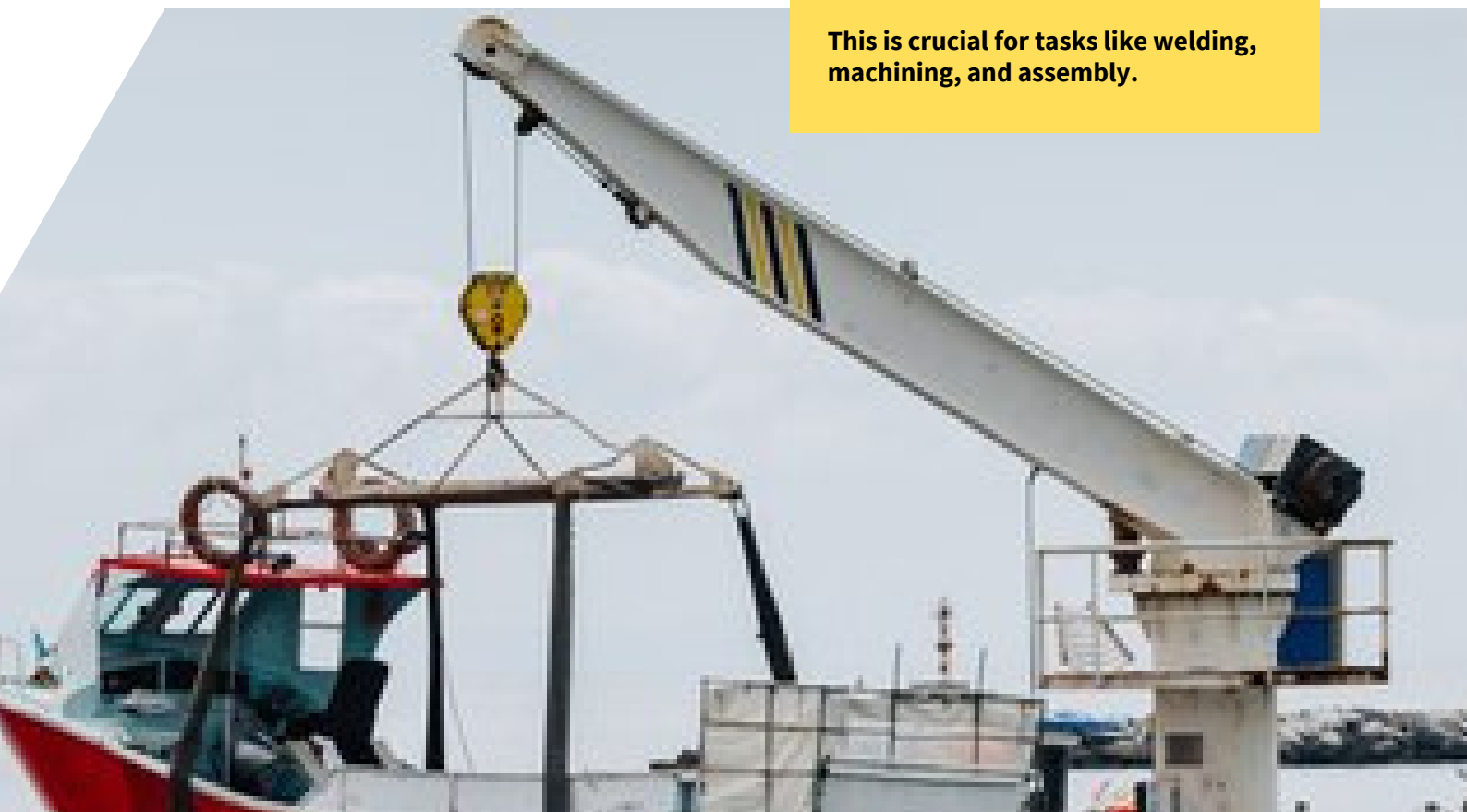
FEATURES

Assembly and Disassembly: They assist in the assembly and disassembly of large and heavy components, such as machinery, equipment, and structural elements.

Loading and Unloading: Jib cranes are ideal for loading and unloading trucks, containers, and other vehicles. They can handle a wide range of loads, from small components to large machinery.

Accurate Placement: Jib cranes allow for precise positioning of loads, ensuring they are placed in the exact location required.

This is crucial for tasks like welding, machining, and assembly.



FUNCTIONS OF JIB CRANES

Jib cranes are versatile material handling devices used to lift and move heavy loads within a specific area. Below are the primary functions of jib cranes:

1. Lifting and Lowering Loads:
2. The main function of a jib crane is to lift and lower loads using a hoist system. The jib arm, typically horizontal or adjustable, moves the load vertically, making it easier to transport materials in confined spaces.
3. Horizontal Movement:
4. Jib cranes can move loads horizontally within their operational radius. This allows the operator to position items precisely in a defined area, reducing the need for additional lifting equipment.
5. Rotating and Slewing (in certain models):
6. Many jib cranes are designed with the ability to rotate or "slew" their jib arm, enabling a 360-degree range of movement. This function is especially useful in applications where the load needs to be moved across a larger area without repositioning the crane.
7. Space Optimization:
8. Jib cranes can function in small or confined spaces, making them ideal for areas like warehouses, workshops, and production facilities. They can be mounted on walls, pillars, or on a fixed base, ensuring efficient use of space.
9. Load Handling in Various Environments:
10. Jib cranes are capable of handling heavy loads in different environments such as construction sites, docks, warehouses, and manufacturing plants. They can be designed for outdoor or indoor use, depending on the specific application.
11. Improving Worker Efficiency and Safety:
12. By reducing manual lifting, jib cranes help improve safety and efficiency in workplaces. They minimize the risk of injury and enhance productivity by speeding up the handling and movement of materials.
13. Customization for Specific Tasks:
14. Jib cranes can be customized with various features, such as different lifting capacities, arm lengths, and hoisting systems, to suit the specific needs of different industries and tasks.

KEY COMPONENTS OF A JIB CRANE

1. Base: The foundation or platform where the crane is mounted. It can be a floor-mounted base or a wall attachment.
2. Mast or Pillar: A vertical structure that supports the jib arm.
3. Jib Arm: The horizontal arm that extends out from the mast. It can be fixed or rotating (slewing).
4. Hoist: The lifting mechanism (typically a winch or chain) that raises and lowers the load.
5. Slewing Mechanism (optional): Allows the crane arm to rotate or swivel around its base to provide more flexibility in movement.

